

## Content

[40 Years WENZEL Präzision](#)

[Opening in Leipzig](#)

[Measuring Software QUARTIS](#)

[Inline Measuring](#)

[Scan & Go](#)

[WENZEL Online Service](#)

[Head and Probe System](#)

[Changer Rack for free](#)

[Largest CMM](#)

[Control review](#)

[Designmeeting](#)



## 40 Years WENZEL Präzision

**When Werner Wenzel started manufacturing precision tools in 1968, he would never have thought that 40 years later the company would be a global player in the world of coordinate metrology.**

Since the introduction of the first self-developed Coordinate Measuring Machine (CMM) in 1980, WENZEL has delivered over 5500 CMMs worldwide to the automotive and aerospace industry, engineering and electrical industry as well as to their suppliers.

The WENZEL Group has grown continuously. Besides WENZEL Metromec in Chur / Switzerland (measuring software) and WENZEL GearTec in Karlsruhe (gear metrology), the WENZEL Group now maintains assembly facilities in the USA and China as well as sales offices all around the globe. Since 2007 the Group has acquired its own stone company for machining granite, the prime CMM building material.

The latest members of the WENZEL Group are WENZEL Xspect Solutions in the USA and

the three subsidiaries in Asia where WENZEL is now established in Shanghai, Singapore and since May 2008 in India.

Today, 40 years after the company's foundation, WENZEL is an innovative and dynamic company with a highly motivated staff and very modern production facilities.

This is testified by the certificates and awards which WENZEL has received over the years. Among these are awards from the Bavarian Government for innovative technical achievements and outstanding quality management. WENZEL is certified according to VDA 6.4 and was elected as one of the top 100 medium sized companies in Germany.

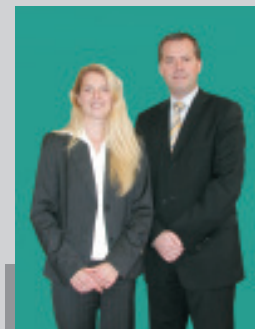
40 years WENZEL, a success story which will be continued!

## Editorial

Dear Sir or Madam,

this year WENZEL will celebrate its 40th anniversary. This is a reason to celebrate and a reason to be proud of the company's history over the last four decades. Today over 500 people worldwide stand behind WENZEL.

They all give their very best every day and have made WENZEL the biggest family-owned company in this industry with more than 5500 coordinate measuring machines sold.



We are looking forward to the next 40 years in which we will also perform as innovative, dynamic and growth-oriented as we had in the past.

How? A short overview is provided in this WENZEL Journal.

Enjoy reading.

Frank Wenzel

Dr. Heike Wenzel-Däfler

## Latest News

### WENZEL continues expansion in Asia

Since May 2008 the WENZEL Group has been represented in India with a new sales and service location. With the foundation of WENZEL South Asia (P) Ltd. in New-Delhi WENZEL enforces its business activities in south and south-east Asia. Following on the foundation of the assembly plant in Shanghai in 2005 and the new sales and service department in Singapore in 2007, this is a further step to fulfil the growing demand in Asia.

#### Further information:

n.bhanot@wenzel-southasia.com



## Opening of WENZEL Messtechnik Leipzig

**WENZEL Messtechnik Leipzig was officially opened on April 10th 2008.**



The continuously growing automotive industry with its many well-known companies make Leipzig, the metropolis in Saxony, a very attractive location for WENZEL.

In addition to the sales of coordinate measuring machines, measuring software and sensors,

WENZEL Messtechnik Leipzig offers extensive competence in the field of metrology. Since December 2007 the experienced team of 10 employees in Leipzig has been supplying engineering services such as quality planning, CAD construction, programming and the analysis of measured data to customers.

WENZEL Messtechnik Leipzig offers its customers complete solutions with one-site service.

Contact: WENZEL Messtechnik Leipzig GmbH, Wiesening 13 D, 04159 Leipzig,

Phone: +49 341 600769-0

Fax: +49 341 600769-29

www.wenzel-group.com

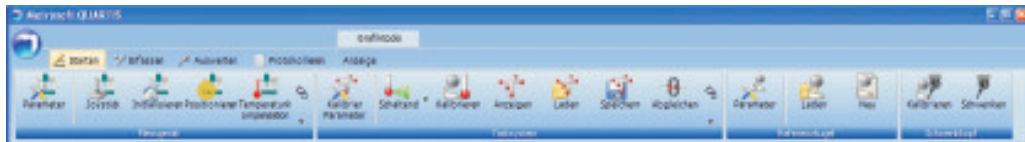
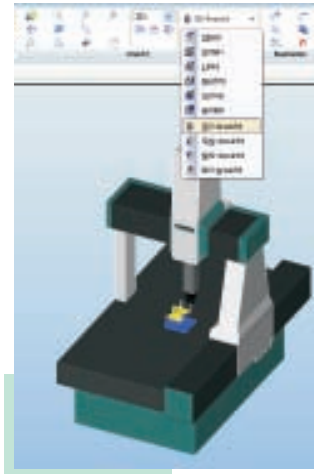
Mail: leipzig@wenzel-cmm.com

## New measuring software

# Metrosoft presents the new measuring software QUARTIS at Control 2008

Today computer programs have to show more and more performance. Many features are difficult to be found by the user. Therefore, the focus of the new software Metrosoft QUARTIS is to be simple and user-friendly. With Metrosoft QUARTIS WENZEL Metromec has launched a new generation of measuring software. Metrosoft QUARTIS is the first measuring software using the innovative Microsoft® Office

Fluent™ user interface, which is considered to be very clearly arranged, flexible and goal-oriented. The result is a highly innovative operation concept, which enables all users easy and fast access to WENZEL Metromec's decade-long wealth of experience. The delivery of QUARTIS will start in January 2009.



## Optical Solution

# Inline measuring with WENZEL



WENZEL has launched an optical measuring system for inspecting components directly during the production process. The combination of an optical measuring system with the well-proven measuring software Metrosoft CM enables the close inspection of parts directly at the flow process.

Essential is the individual adaption to the general set-up on-site. Due to the use of an intelligent camera system, parts are checked within cycle time of the flow process. The measuring results are immediately transferred to the process

controller. The online correction effects automatically via defined interfaces in real-time.

The data transfer to the different interfaces uses standardized formats thus the interaction with CAQ-Systems and the logistic control is fully integrated.

Ask for further information at [info@wenzel-cmm.com](mailto:info@wenzel-cmm.com)

## “Scan & Go”

# Point clouds as basis for rational working in industry



WENZEL's “Scan & Go” is the perfect solution for collecting and processing point clouds. It is perfect for tool and die making, design and everyone who collects and processes surfaces and outlines of physical objects.

The concept of the solution is based on two versions: An economically priced complete solution named “Scan & Go” including a coordinate measuring machine (CMM), a scanner and software along with a retrofit package for upgrading existing

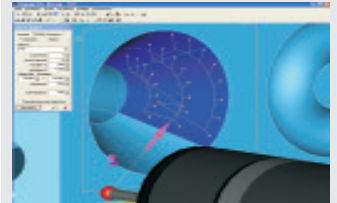
WENZEL CMMs or other machine types. 3D-CMMs of the WENZEL series Smart, XOrbit or LH which are equipped with a Renishaw PH6M measuring head or a PH10M motorised probe head can be upgraded with the sensor “Shapetracer”. This combination is the perfect solution for collection and processing point clouds.

With the Shapetracer, which can easily be installed by the Multiwire-Adapter from Renishaw, surfaces can be scanned with a scan-speed of up to 48.000 points per second

## Usermeeting

### Advance notice

The next WENZEL-Metromec user meeting will take place on 22nd and 23rd of October 2008.



All users of Metrosoft are very welcome.

For further information please contact Ina Bernard: [ina.bernard@wenzel-cmm.com](mailto:ina.bernard@wenzel-cmm.com)

Please reserve this date!

## Imprint

**WENZEL Group GmbH & Co. KG**  
Werner-Wenzel-Straße  
D-97859 Wiesthal

Phone: +49 6020 201-0  
Fax: +49 6020 201-1999

Mail: [info@wenzel-cmm.com](mailto:info@wenzel-cmm.com)  
Internet: [www.wenzel-group.com](http://www.wenzel-group.com)

**Editor:**  
WENZEL Group GmbH & Co. KG  
**Responsible:**  
Dr. Evelin Arnold

and with an accuracy of  $\pm 20 \mu\text{m}$ . The WENZEL Shapetracer is driven by the software package “Pointmaster”.

The WENZEL-Pointmaster V4 Software offers several features which makes it easy to use even by less experienced users.

## Remote Diagnose

### Do you know the WENZEL Online Service?

The WENZEL Online Service (WOS) is the internet-based remote diagnostics and maintenance service for your measuring machine. This service is free of charge during your warranty period.

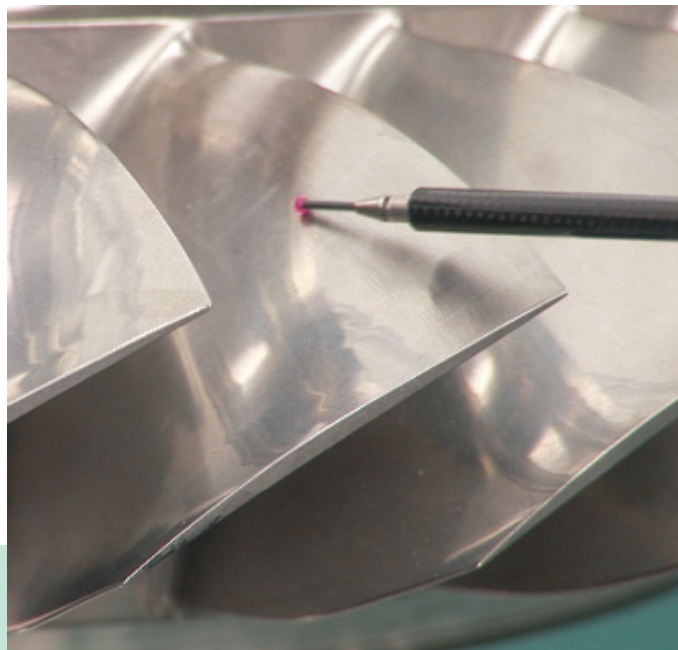
The WOS includes user support, software updates and service. It significantly reduces response and down times in case of breakdown. You can easily test the WENZEL Online Service without any obligations.

Download the WOS client on your computer and start the program with a simple double click and you will have immediately online contact with our specialists.

You always have full control over your applications, which you have

given access for support. With a simple mouse click you can end the connection at any time. Every session is recorded and available as a coded video data file. Every time you start a session you have to log in with your user ID and password. This guarantees maximum security.

It would be a pleasure for us to give you a demonstration of the new WENZEL Online Service.



## Changer rack for free

### More flexibility and measuring performance!

Buy a WENZEL coordinate measuring machine together with a motorised probe head type PH10T, PH10M or PH10MQ and a probe system (e.g. TP20, TP200, SP25M etc.) and you will get from WENZEL and Renishaw a change rack and the corresponding module of the measuring software for free.

The different measuring tasks required by your measuring machine demand a highly flexible and multifunctional probe system. A single sensor and only one stylus

configuration will hardly be able to accomplish all measuring tasks. Complex measurements often require that the stylus configuration has to be changed.

With the automatic change system it is quite simple to use the optimal stylus configuration for each different measuring task.

## Unrivalled

### WENZEL Coordinate Measuring Technology with REVO™

Coordinate measuring machines from WENZEL equipped with the REVO™ probe system from Renishaw allows for ultra-rapid and high-precision measuring. This will increase your measuring throughput significantly.

Five axis scanning of complex contours: The REVO™ system has the unique feature to process huge volumes of most precise measuring data combined with extremely high scanning speeds. Renscan5™ „Tip-Sensing“ probe heads need only one calibration for all measuring positions. Therefore, several hours of set-up time can be saved.

The crucial factor for the unprecedented scanning speed and measuring flexibility is the user friendly measuring software Metrosoft CM. Metrosoft CM ensures the complete integration

of the 5-axis functionality for all required positioning movements. Moreover, it offers the possibility to measure all elements with the REVO™ in scanning or triggering mode.

Additional advantages are easy measuring of cylinders, quick capturing of point surfaces and profiles including the conversion into geometric elements. The straightforward export of the measuring data for individual evaluations makes this the perfect package.



## LHF for aircraft industrie

# Largest CMM in company history shipped

WENZEL has shipped the largest coordinate measuring machine in its forty years old history. The CMM, type LHF 3020 with a measuring range of 3000 mm x 10000 mm x 2000 mm is featured by an excellent access and highest free moving speed.

The 10-metre CMM was delivered to one of the worlds leading aircraft manufacturers and is another important reference for WENZEL in the aerospace industry. The LHF CMM is also very popular for power train applications which are increasingly faced with the problem of measuring complex prismatic units with

free formed surfaces and big gears. Until now two machines were needed for these tasks. With the WENZEL LHF CMM tasks like this are easy to accomplish by measuring and analyzing on one measuring machine.

The dual drive Y-axis makes the machine unbeatable in terms of accuracy, combined with the unique stability of the guideways. Guideways and traverses are made from dark granite. Hence, all axes show the same thermal characteristics - a speciality of WENZEL and an important advantage in competition. For further information please open



the movie "LHF in Motion" in the rubric "Video" on our homepage. The German professional journal "QZ - Qualität und Zuverlässigkeit" for quality and reliability published in its May issue an article about this topic:

"Two tasks on one machine - 3D measuring for big gears and gear boxes".

If you are interested please send an E-Mail to [steffen.hochrein@wenzel-cmm.com](mailto:steffen.hochrein@wenzel-cmm.com)

## Exhibition report

# Control 2008 a complete success



CONTROL, the premier international trade fair for quality assurance took place from 22nd to 25th April 2008. This year the fair was at the new and very modern 'Landesmesse Stuttgart' for the first time. WENZEL was, of course among the 902 exhibitors.

Following the slogan of the fair: „Success through Quality“ WENZEL showed its wide product range to the 25,000 professional visitors from 40 countries.

This year's highlight was presented by WENZEL Metromec AG, Switzerland. Control was chosen for the official

world premier of the new measuring software generation Metrosoft QUARTIS (see article page 2). The high level of integration of the I++ DME interface into Metrosoft CM was impressively demonstrated on the Renishaw stand.

There, the new and high capacity probe head REVO was operated with Metrosoft CM via the I++ DME interface on a WENZEL CMM Type LH 108. Metrosoft CM from Wenzel Metromec is the leading measuring software in the support of the future oriented sensor system REVO from

Renishaw. The WENZEL Software Metrosoft CM 3.80 can be used as I++ DME Server as well as Client.

The unprecedented visitor levels showed that the new design of the exhibition stand and the extension to over 300 square meters was well received by the visitors. Compared to Control in 2007 the number of contacts increased considerably. Some orders were even directly placed at the fair.

## Exhibition '08

### Dates 2008

**09. - 12. June**  
Mach-Tool Poznan (Poznan, Polen)

**10. - 13. June**  
AUTOMATICA (Munich, Germany)

**10. - 13. June**  
PTAC (Beijing, China)

**09. - 12. July**  
MTA (Ho Chi Minh City, Vietnam)

**08. - 13. September**  
IMTS (Chicago, USA)

**09. - 13. September**  
AMB (Stuttgart, Germany)

**15. - 19. September**  
IMT (Brünn, Czech Republic)

**23. - 26. September**  
Qualipro (Dortmund, Germany)

**29. September - 4. October**  
ITM (Plovdiv, Bulgaria)

**03. - 07. October**  
Bi-mu (Milano, Italy)

**30. October - 06. November**  
JIMTOF (Tokyo, Japan)

**03. - 06. December**  
Euromold (Frankfurt, Germany)

## International Design Meeting

# The experts meet at WENZEL



The experts agreed that the Design Meeting 2008 in Wiesthal was a complete success.

WENZEL Präzision GmbH invited to the international Design Meeting on 10th and 11th of April 2008 twenty-five modellers and designers from high profile companies such as Audi, BMW, FORM3 DESIGNSTUDIOS, GME Design, Kia, Mazda, Opel, Skoda and VW. All were very interested in the numerous technical speeches and demonstrations.

The technological highlight was a new innovative development from



WENZEL: The new WENZEL 2-axes-milling-head for processing components on 3D-coordinate-measuring-machines. It is the latest development of a 2-axes-milling-head for design components, normally produced from heavy duty clay-mills, now directly inside the studio environment. Milling programmes can be generated based on captured data from the measuring machine or external CAD / CAM data. Machining processes can be done directly on the measuring machine for optimising parts especially with free form surfaces.

All software functions are provided by the design package DesCAD3D. DesCAD3D is a powerful tool for modellers and designers.

At the cross-company event the visitors exchanged their experiences and ideas in the fields of design hardware and modern application concepts. The visitors also took the opportunity for discussions with our experts in a relaxed atmosphere.

A special thank was given to Heinrich Fest for the presentation of the design process at Volkswagen as well as to Michael Killer and Dominique Bauer for their field report with the WENZEL 2-axes-milling-head at Audi. Also the lectures from James Howell, former chief modeller from Mazda, on the subject of milling with off-line programmes and milling of 1:4 models as well as the following assessment of the milling model have to be pointed out.

Following the success of this event we are looking forward to the next design meeting.